



davimast

PPE anchor point or modular load lifting system.

davimast

PPE anchor point or modular load lifting system.

The davimast is a PPE anchor point or modular load lifting system that can be used:

- As a PPE anchor point when equipped with the 360° rotating anchor points to secure 2 users of 150 kg.
- As a temporary anchor point for tempo 3 lifeline when equipped with the 360° rotating anchor points.
- As a PPE anchor point when equipped with a blocfor™ 20R or 30R ESD and a bracket to secure an operator on the surface and an operator in a manhole.
- As a load lifting anchor point when equipped with a caRoI™ TS 250 and bracket.

QUALITY:

- Compact.
- Easy to use.

FLEXIBILITY:

- Well suited for use as a transportable anchor point.
- Anchorage for 2 users.
- Can be used for lifting materials.
- Different type of bases.
- Modular: different combinations possible with lifting and fall arrest device Tractel® products.
- Different brackets for multiple uses.

TECHNICAL CHARACTERISTICS:

- 2 users: 150 kg each.
- Compatible for use in confined space applications.
- Maximum load capacity (materials): WLL 250 kg.
- Compatible with horizontal lifelines with an impact force inferior to 750 daN.

SECURITY:

- Provides an elevated anchorage point.
- Equipped with 150 kg PPE anchor points: secures 2 people simultaneously.

ERGONOMICS:

- Easy handling / Very lightweight.
- Easy storage.
- Easy to transport.
- Easy to install: no tools required for assembly.

COMPATIBLE APPLICATIONS

- Rescue
- Confined spaces
- Rope works
- Manholes
- Pits

Standards

davimast complies with:

- **EN 795-A: 2012** (fixed anchor points)
- **CEN/TS 16415: 2013-B** (Fall arrest for 2 users of 150 kg each)
- **Machine Directive 2006/42/CE** (Material lifting)

Can be used with system conform to:

- **EN 360, EN 353-2 or EN 355** (Individual protection of operators against falls)
- **EN 1496** (rescue) **with blocfor™ R and davimast bracket**
- **EN 795** (horizontal lifeline with an impact force inferior to 750 daN)
- **Machine Directive 2006/42/CE** (Material lifting) **when used with caRoI™ TS 250 and bracket**

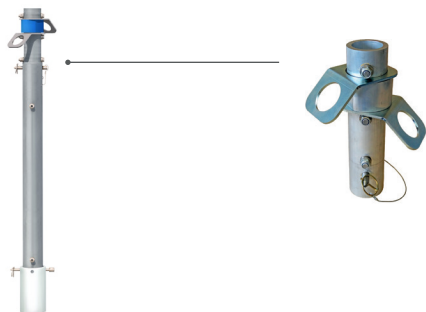
Tractel® supports you in your project and offers you a wide range of individual and collective protection solution that secures the operations.

Contact us for more information: www.tractel.com

davimast

Different brackets for multiple uses

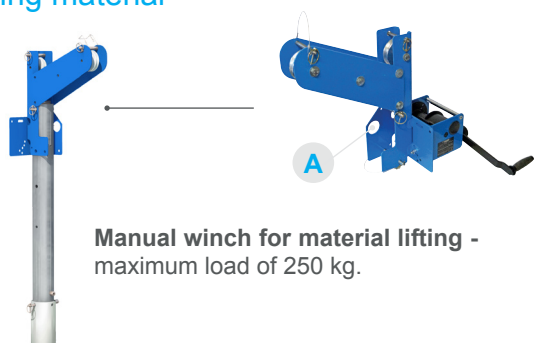
davimast with 360° rotating anchor points



Provides 2 independent 360° rotating anchor points for fall arrest anchorage.
For 2 users: 150 kg each.

davimast with caRol™ TS and bracket

Lifting material



Manual winch for material lifting - maximum load of 250 kg.

caRol™ TS 250 winch 250 kg meets the requirements of hoisting winches with a maximum load of 250 kg (Directive 2006/42 / EEC).

- Available cable lengths of 20 m and 30 m.
- The winch cable is guided by equipped pulleys with an anti-jump pin fixed on the arrow of davitrac.

A One anchor point: allows to secure an operator up to 150 kg, equipped with his tools.

davimast with blocfor™ and bracket

Safety & rescue



Automatic fall arrester (EN360) with rope (galvanised or stainless steel), with rescue winch (EN1496).

Can be easily integrated on the davimast, without tools.

Allows to secure an operator up to 150 kg, equipped with his tools.

- Automatic fall protection device with integrated winch for ascending or descending during a possible rescue operation.
- Shock-absorption system: ensures that the user will not be subjected to an impact of more than 600 daN even if the fall occurs when the cable is fully unwound.
- The blocfor cable is guided by equipped pulleys with an anti-jump pin fixed on the head of davimast.

A One anchor point: allows to secure an operator up to 150 kg, equipped with his tools.

davimast with 2 anchor points 360° for horizontal lifeline



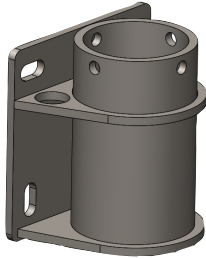
Provides anchor points for installation of a tempo 3 temporary lifeline.

For 3 users: 150 kg each.

davimast

Different brackets for multiple uses

Wall mounted adapter



Wall mounted adapter fixed to concrete or steel vertical structures. Adapter with anchoring points to secure two persons (150 kg each) at the same time.

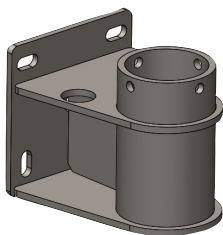
Flush floor adapter



Flush adapter moulded into the concrete. Ideal to have no obstacles on the ground surface to prevent falls.

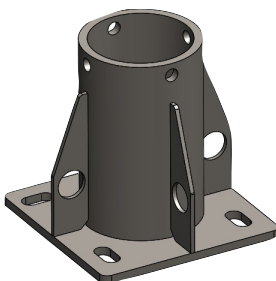
*Delivered with a special protection stopper, to use when davitrac is not used/integrated on the adapter.

Clearance mural adapter



Clearance mural adapter (with 291 mm offset) fixed to concrete or steel vertical structures. Adapter with anchoring points to secure two persons (150 kg each) at the same time.

Mounted floor adapter

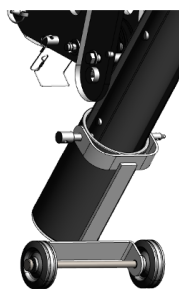


Mounted floor adapter fixed to concrete or steel horizontal structure. Adapter with anchoring points to secure two persons (150 kg each) at the same time.

davimast

PPE anchor point or modular load lifting system.

Accessories



Transport trolley for davimast



Transport bag

Model name	Product code
davimast - mast	210188
bracket with 2 anchor points	210198
blocfor™ 20R galva ESD with bucket for davimast - 150 kg range	84362
blocfor™ 20R inox with bracket for davimast - 100 kg range	84372
blocfor™ 30R galva ESD with bucket for davimast - 150 kg range	84382
blocfor™ 30R ESD with bracket for davimast - 100 kg range	84392
caRoI™ TS 250 kg with 20 m of galvanized cable galva and bracket for davimast	293799
caRoI™ TS 250 kg with 30 m of galvanized cable galva and bracket for davimast	293809
tempo 3 lifeline	207068
Wall mounted adapter	210118
Clearance mural adapter	210128
Mounted floor adapter	210108
Flush floor adapter	210138
Transport trolley	210618
Transport bag	68752

Confined Access - Solutions



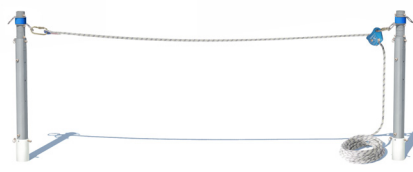
Scan this QR Code & discover all our confined access solutions.

Tractel®'s experience puts it at the forefront of providing safe, reliable and easy-to-use equipment for installation and maintenance. A complete product range, combined with extensive expertise and experience in compliance to standards, as well as an online solution configurator make Tractel® the perfect partner.

<https://www.tractel.com/global/catalogue/confined-space>



davitrac



davimast



tracode



tracrod

TRIED, TESTED, TRACTEL®

www.tractel.com

GLOBAL REACH



NORTH AMERICA

CANADA

Tractel Ltd.
1615 Warden Avenue
Toronto, Ontario M1R 2T3, Canada
Phone: +1 800 465 4738
Fax: +1 416 298 0168
Email: marketing.swingstage@tractel.com

11020 Mirabeau Street
Montréal, QC H1J 2S3, Canada
Phone: +1 800 561 3229
Fax: +1 514 493 3342
Email: tractel.canada@tractel.com

MÉXICO

Tractel México S.A. de C.V.
Galileo #20, O cina 504.
Colonia Polanco
México, D.F. CP. 11560
Phone: +52 55 6721 8719
Fax: +52 55 6721 8718
Email: tractel.mexico@tractel.com

USA

Tractel Inc.
51 Morgan Drive
Norwood, MA 02062, USA
Phone: +1 800 421 0246
Fax: +1 781 826 3642
Email: tractel.usa-east@tractel.com

168 Mason Way
Unit B2
City of Industry, CA 91746, USA
Phone: +1 800 675 6727
Fax: +1 626 937 6730
Email: tractel.usa-west@tractel.com

BlueWater L.L.C

4064 Peavey Road
Chaska, MN 55318, USA
Phone: +1 866 579 3965
Email: info@bluewater-mfg.com

Fabenco, Inc

2002 Karbach St.
Houston, Texas 77092, USA
Phone: +1 713 686 6620
Fax: +1 713 688 8031
Email: info@safetygate.com

EUROPE

GERMANY

Tractel Greifzug GmbH
Scheidt bachstrasse 19-21
51469 Bergisch Gladbach, Germany
Phone: +49 22 02 10 04-0
Fax: +49 22 02 10 04 70
Email: info.greifzug@tractel.com

LUXEMBOURG

Tractel Secalt S.A.
Rue de l'Industrie 12
B.P 1113 - 3895 Foetz, Luxembourg
Phone: +352 43 42 42-1
Fax: +352 43 42 42-200
Email: secalt@tractel.com

SPAIN

Tractel Ibérica S.A.
Carretera del Medio, 265
08907 L'Hospitalet del Llobregat
Barcelona, Spain
Phone: +34 93 335 11 00
Fax: +34 93 336 39 16
Email: infotib@tractel.com

FRANCE

Tractel S.A.S.
RD 619 Saint-Hilaire-sous-Romilly
BP 38 Romilly-sur-Seine
10102, France
Phone: +33 3 25 21 07 00
Email: info.tsas@tractel.com

Ile de France Maintenance Service S.A.S.

Zac du Gué de Launay
77360 Vaires sur Marne, France
Phone: +33 1 56 29 22 22
E-mail: ifms.tractel@tractel.com

Tractel Location Service

Zac du Gué de Launay
77360 Vaires sur Marne, France
Phone: +33 1 60 36 30 00
E-mail: info.tls@tractel.com

Tractel Solutions S.A.S.

77-79, rue Jules Guesde
69230 St Genis-Laval, France
Phone: +33 4 78 50 18 18
Fax: +33 4 72 66 25 41
Email: info.tractelsolutions@tractel.com

GREAT BRITAIN

Tractel UK Limited
Old Lane Halfway
Sheffield S20 3GA, United Kingdom
Phone: +44 114 248 22 66
Email: sales.uk@tractel.com

ITALY

Tractel Italiana SpA
Viale Europa 50
Cologno Monzese (Milano) 20093, Italy
Phone: +39 02 254 47 86
Fax: +39 02 254 71 39
Email: infoit@tractel.com

NETHERLANDS

Tractel Benelux BV
Paardeweide 38
Breda 4824 EH, Netherlands
Phone: +31 76 54 35 135
Fax: +31 76 54 35 136
Email: sales.benelux@tractel.com

PORTUGAL

Lusotractel Lda
Bairro Alto Do Outeiro Armazém 1
Trajouce, 2785-653 S. Domingos
de Rana, Portugal
Phone: +351 214 459 800
Fax: +351 214 459809
Email: comercial.lusotractel@tractel.com

POLAND

Tractel Polska Sp. z o.o.
ul. Byslawska 82
Warszawa 04-993, Poland
Phone: +48 22 616 42 44
Fax: +48 22 616 42 47
Email: tractel.polska@tractel.com

NORDICS

Tractel Nordics (Scanclimber OY)
Turkkirata 26
FI - 33960
Pirkalla, Finland
Phone: +358 10 680 7000
Fax: +358 10 680 7033
E-mail: tractel@scanclimber.com

RUSSIA

Tractel Russia O.O.O.
Olympiysky Prospect 38, Office 411
Mytishchi, Moscow Region
141006, Russia
Phone: +7 495 989 5135
Email: info.russia@tractel.com

ASIA

CHINA

Shanghai Tractel Mechanical Equip. Tech. Co. Ltd.
2nd oor, Block 1, 3500 Xiupu road,
Kangqiao, Pudong,
Shanghai, People's Republic of China
Phone: +86 21 6322 5570
Fax: +86 21 5353 0982

SINGAPORE

Tractel Singapore Pte Ltd
50 Woodlands Industrial Park E7
Singapore 757824
Phone: +65 6757 3113
Fax: +65 6757 3003
Email: enquiry@tractelsingapore.com

UAE

Tractel Secalt SA Dubai Branch
Office 1404, Prime Tower Business Bay
PB 25768 Dubai, United Arab Emirates
Phone: +971 4 343 0703
Email: tractel.me@tractel.com

INDIA

Secalt India Pvt Ltd.
412/A, 4th Floor, C-Wing, Kailash
Business Park, Veer Savarkar Road,
Parksite, Vikhroli West,
Mumbai 400079, India
Phone: +91 22 25175470/71/72
Email: info@secalt-india.com

TURKEY

Knot Yapı ve İş Güvenliği San.Tic. A.Ş.
Cevizli Mh. Tugay Yolu CD.
Nuvo Dragos Sitesi
A/120 Kat.11 Maltepe
34846 Istanbul, Turkey
Phone: +90 216 377 13 13
Fax: +90 216 377 54 44
Email: info@knot.com.tr

ANY OTHER COUNTRIES:

Tractel S.A.S.

RD 619 Saint-Hilaire-sous-Romilly
BP 38 Romilly-sur-Seine
10102, France
Phone: +33 3 25 21 07 00
Email: info.tsas@tractel.com



www.tractel.com

